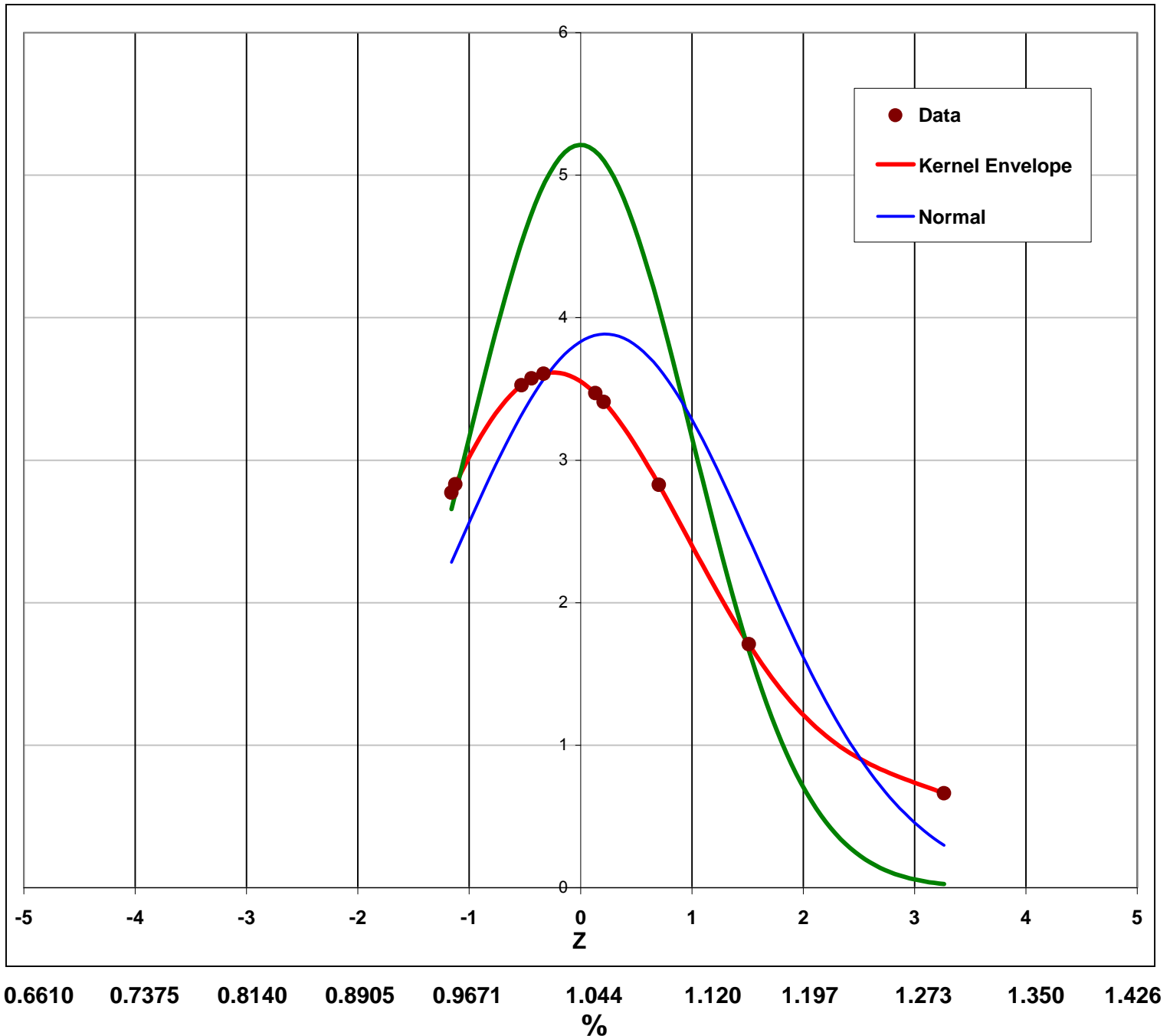


Method: Fructose, 1 g/100ml Code: 001.00 (%)

SugarsStudy2013 Sample # 100010



Test Parameters	Raw Data	Robust
Mean	1.0607	1.0436
SD	0.10267	0.07653
%RSD	9.68%	7.33%
Average Range	0.0255	Na
Use Robust Statistics if n > 5?		OK!
Median	1.0360	1.0360
MAD	0.04725	0.0472
IQR	0.08325	0.08325
Min	0.95480	0.95480
Max	1.2935	1.1411
Kernel Density Bandwidth (h)		
Kernel h (0.75*σp IHP) (d1)		0.0770
# Labs subject to Robustification		10
# of H15 Iterations		2
Uncertainty in Assigned Value		
Uncertainty From Robust sd (U)		0.0171
Robust sd * 0.3		0.0230
Is U < Robust sd * 0.3?		Yes
95% CI of Robust Mean		
Lower		1.0101
Upper		1.0772
Mandel's Statistics		
	P	Critical
Dups too Far Apart (k)	0.01	2.324
Extreme Outlier (h)	1E-10	2.840
Count Used in Calculations		10
# Labs Submitting Results		10
# Values to the Right, off Chart		0
# Values to the Left, off Chart		0
# Analysts not Included in Calcs		0
Method Validation data		
Between Labs sL		0.0646
Within Labs sr		0.0181
Reproducibility sR		0.0671
Between Labs %RSD		6.24%
Within Labs %rsd		1.75%
Reproducibility %RSD		6.48%
Horwitz (%RSD)		3.97%
Average Range		0.0255
U NITS		%

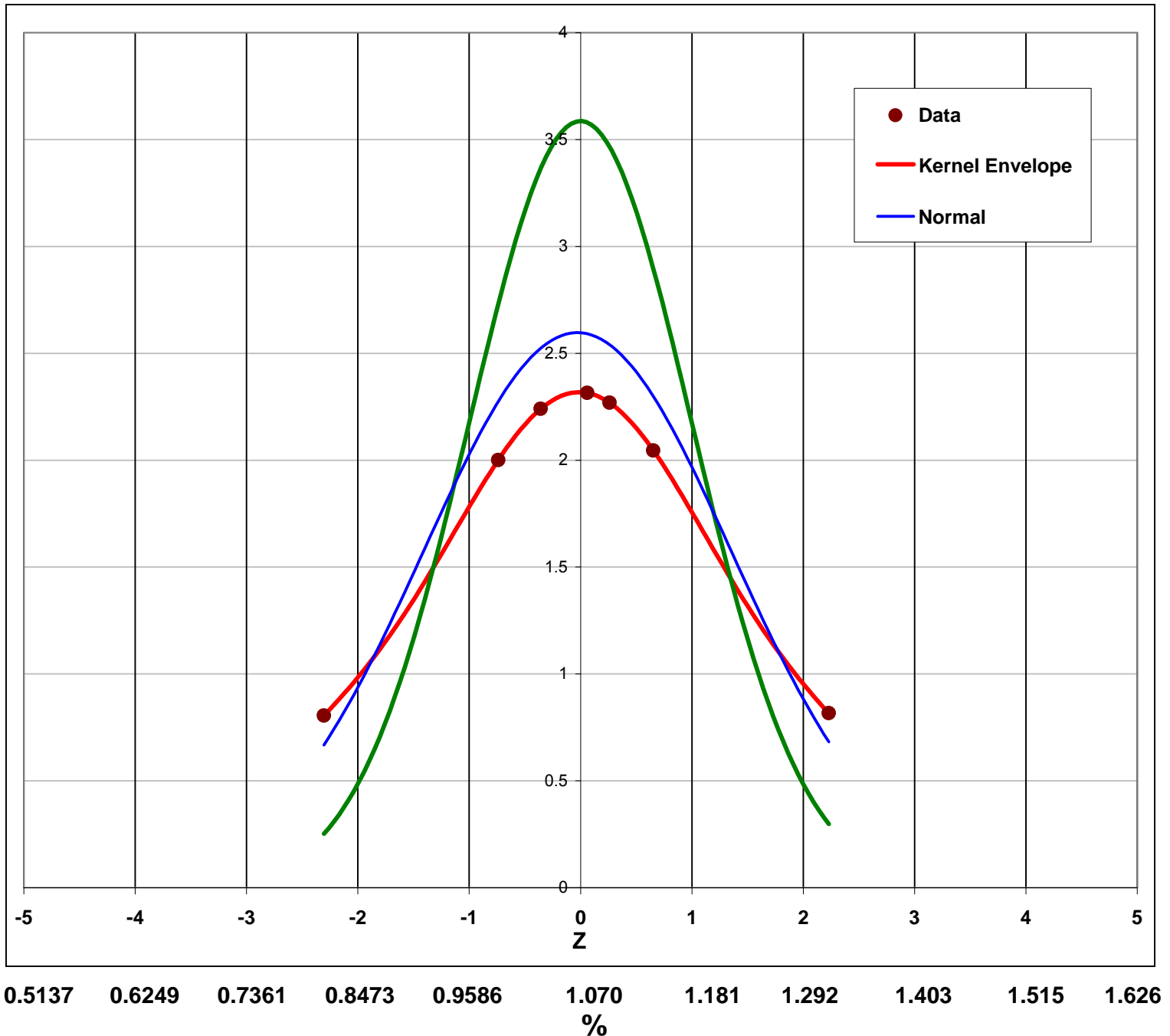


Method: Galactose, 1 g/100ml Code: 002.00 (%)

SugarsStudy2013 Sample # 100010



Test Parameters	Raw Data	Robust
Mean	1.0666	1.0698
SD	0.15364	0.11123
%RSD	14.40%	10.40%
Average Range	0.0621	Na
Use Robust Statistics if n > 5?		OK!
Median	1.0765	1.0765
MAD	0.06600	0.0660
IQR	0.11189	0.11189
Min	0.81350	0.92968
Max	1.3178	1.2233
Kernal Density Bandwidth (h)		
Kernel h (0.75*σp IHP) (d1)		0.1152
# Labs subject to Robustification		7
# of H15 Iterations		2
Uncertainty in Assigned Value		
Uncertainty From Robust sd (U)		0.0297
Robust sd * 0.3		0.0334
Is U < Robust sd * 0.3?		Yes
95% CI of Robust Mean		
Lower		1.0115
Upper		1.1280
Mandel's Statistics		
	P	Critical
Dups too Far Apart (k)	0.01	2.207
Extreme Outlier (h)	1E-10	2.268
Count Used in Calculations		7
# Labs Submitting Results		7
# Values to the Right, off Chart		0
# Values to the Left, off Chart		0
# Analysts not Included in Calcs		0
Method Validation data		
Between Labs sL		0.1474
Within Labs sr		0.0615
Reproducibility sR		0.1597
Between Labs %RSD		13.81%
Within Labs %rsd		5.77%
Reproducibility %RSD		14.97%
Horwitz (%RSD)		3.96%
Average Range		0.0621
U NITS		%

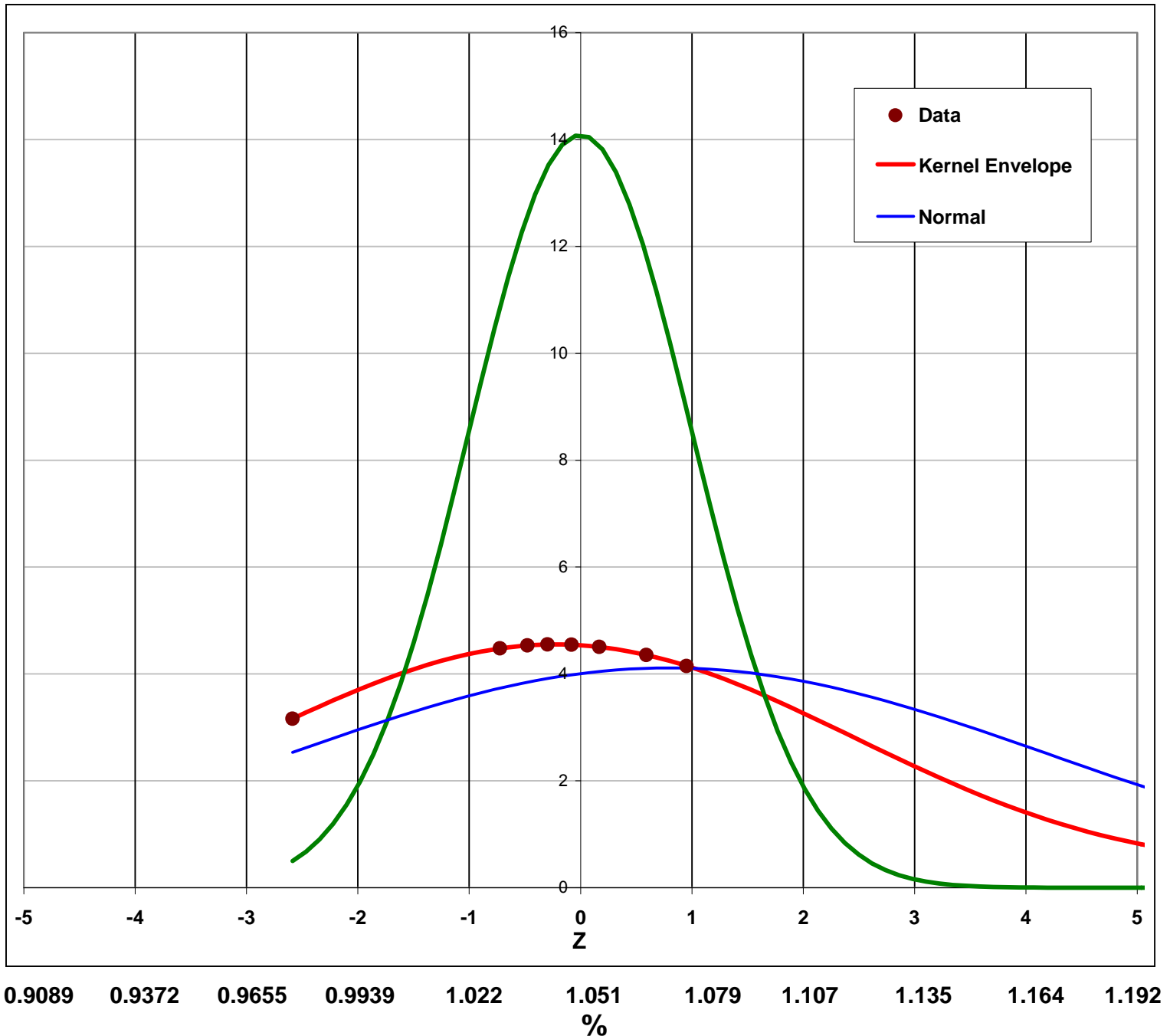


Method: Glucose, 1 g/100ml Code: 003.00 (%)

SugarsStudy2013 Sample # 100010



Test Parameters	Raw Data	Robust
Mean	1.0727	1.0505
SD	0.09699	0.02832
%RSD	9.04%	2.70%
Average Range	0.0263	Na
Use Robust Statistics if n > 5?		OK!
Median	1.0483	1.0483
MAD	0.01825	0.0183
IQR	0.03028	0.03028
Min	0.97725	1.0080
Max	1.3200	1.0888
Kernal Density Bandwidth (h)		
Kernel h (0.75*σp IHP) (d1)		0.0727
# Labs subject to Robustification		9
# of H15 Iterations		10
Uncertainty in Assigned Value		
Uncertainty From Robust sd (U)		0.0067
Robust sd * 0.3		0.0085
Is U < Robust sd * 0.3?		Yes
95% CI of Robust Mean		
Lower		1.0374
Upper		1.0635
Mandel's Statistics		
	P	Critical
Dups too Far Apart (k)	0.01	2.294
Extreme Outlier (h)	1E-10	2.664
Count Used in Calculations		9
# Labs Submitting Results		9
# Values to the Right, off Chart		1
# Values to the Left, off Chart		0
# Analysts not Included in Calcs		0
Method Validation data		
Between Labs sL		0.0269
Within Labs sr		0.0201
Reproducibility sR		0.0336
Between Labs %RSD		2.58%
Within Labs %rsd		1.93%
Reproducibility %RSD		3.22%
Horwitz (%RSD)		3.97%
Average Range		0.0263
U NITS		%



Method: Lactose, 1 g/100ml Code: 004.00 (%)

SugarsStudy2013 Sample # 100010



Test Parameters	Raw Data	Robust
Mean	0.98255	0.98552
SD	0.05697	0.05894
%RSD	5.80%	5.98%
Average Range	0.0179	Na
Use Robust Statistics if n > 5?		OK!
Median	0.99250	0.99250
MAD	0.03750	0.0375
IQR	0.07075	0.07075
Min	0.89500	0.90908
Max	1.0505	1.0505

Kernal Density Bandwidth (h)	
Kernel h (0.75*σp IHP) (d1)	0.0427
# Labs subject to Robustification	9
# of H15 Iterations	2

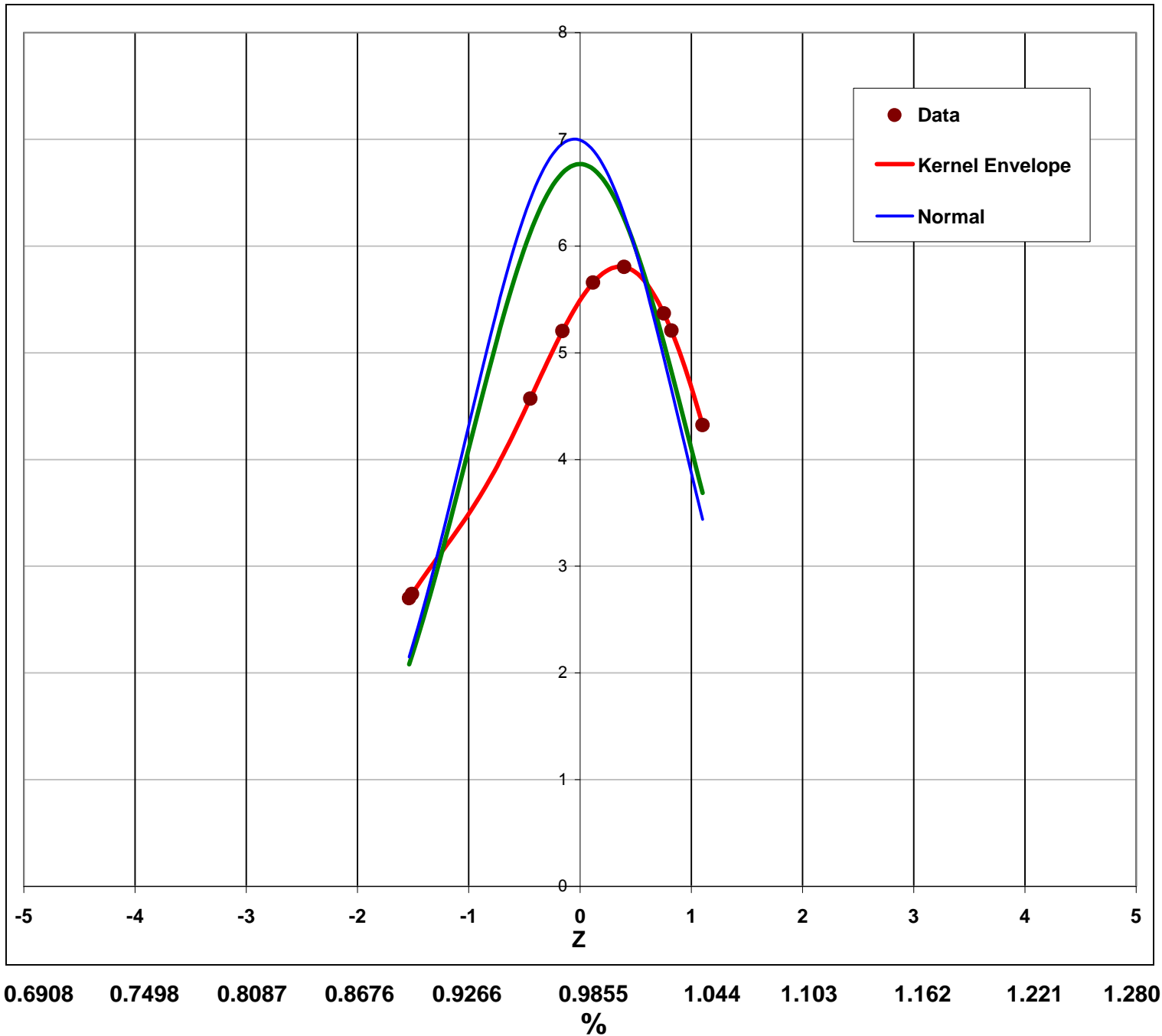
Uncertainty in Assigned Value	
Uncertainty From Robust sd (U)	0.0139
Robust sd * 0.3	0.0177
Is U < Robust sd * 0.3?	Yes

95% CI of Robust Mean	
Lower	0.95829
Upper	1.0127

Mandel's Statistics	P	Critical
Dups too Far Apart (k)	0.01	2.324
Extreme Outlier (h)	1E-10	2.840

Count Used in Calculations	9
# Labs Submitting Results	10
# Values to the Right, off Chart	0
# Values to the Left, off Chart	0
# Analysts not Included in Calcs	0

Method Validation data	
Between Labs sL	0.0556
Within Labs sr	0.0176
Reproducibility sR	0.0583
Between Labs %RSD	5.66%
Within Labs %rsd	1.79%
Reproducibility %RSD	5.94%
Horwitz (%RSD)	4.01%
Average Range	0.0179
U NITS	%

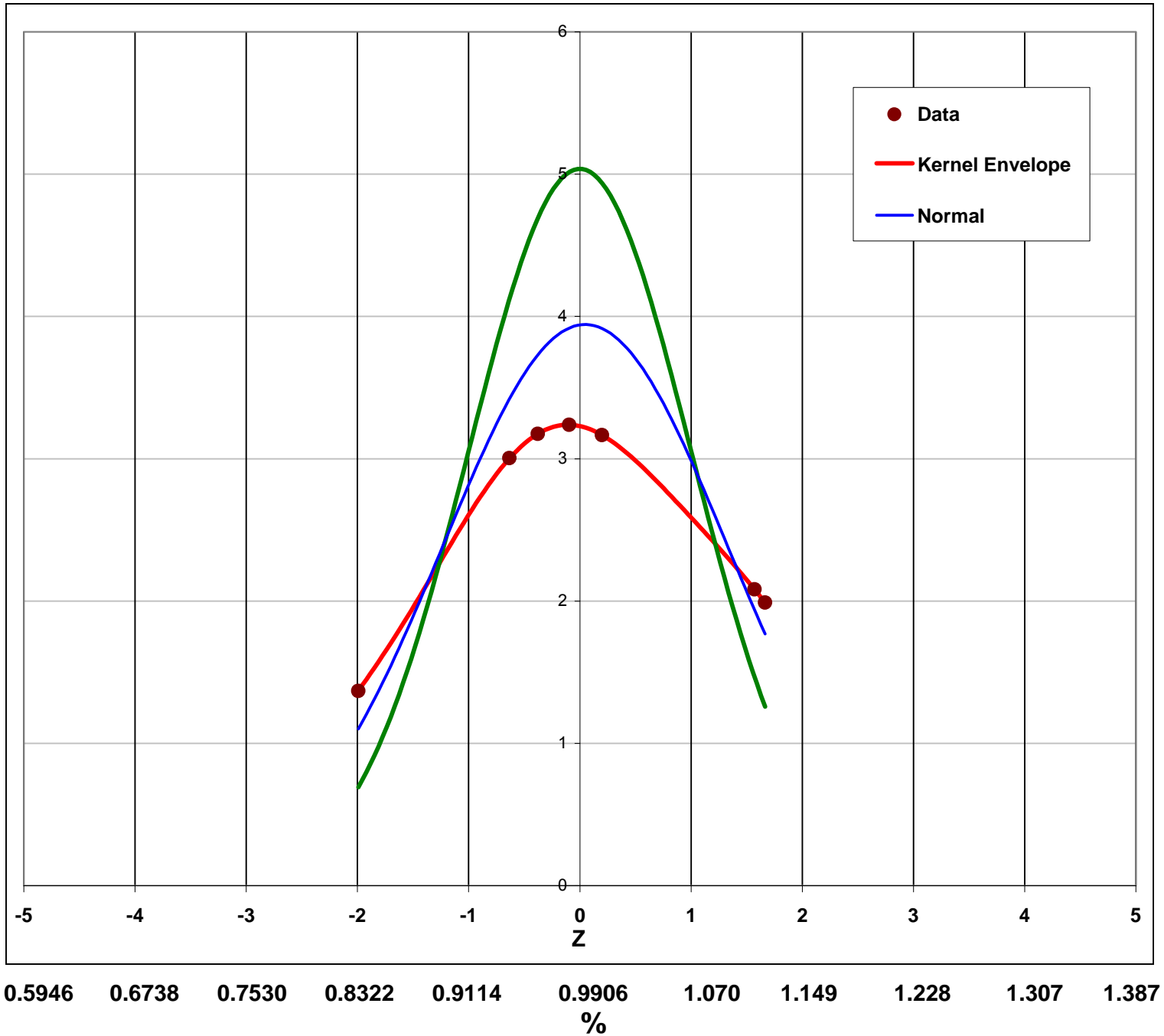


Method: Maltose, 1 g/100ml Code: 005.00 (%)

SugarsStudy2013 Sample # 100010



Test Parameters	Raw Data	Robust
Mean	0.99438	0.99057
SD	0.10116	0.07920
%RSD	10.17%	8.00%
Average Range	0.0278	Na
Use Robust Statistics if n > 5?		OK!
Median	0.98300	0.98300
MAD	0.04250	0.0425
IQR	0.11012	0.09139
Min	0.83275	0.88846
Max	1.1225	1.0775
Kernel Density Bandwidth (h)		
Kernel h (0.75*σp IHP) (d1)		0.0759
# Labs subject to Robustification		7
# of H15 Iterations		2
Uncertainty in Assigned Value		
Uncertainty From Robust sd (U)		0.0212
Robust sd * 0.3		0.0238
Is U < Robust sd * 0.3?		Yes
95% CI of Robust Mean		
Lower		0.94908
Upper		1.0321
Mandel's Statistics		
	P	Critical
Dups too Far Apart (k)	0.01	2.256
Extreme Outlier (h)	1E-10	2.474
Count Used in Calculations		7
# Labs Submitting Results		8
# Values to the Right, off Chart		0
# Values to the Left, off Chart		0
# Analysts not Included in Calcs		0
Method Validation data		
Between Labs sL		0.1102
Within Labs sr		0.0143
Reproducibility sR		0.1111
Between Labs %RSD		11.06%
Within Labs %rsd		1.43%
Reproducibility %RSD		11.16%
Horwitz (%RSD)		4.01%
Average Range		0.0278
U NITS		%

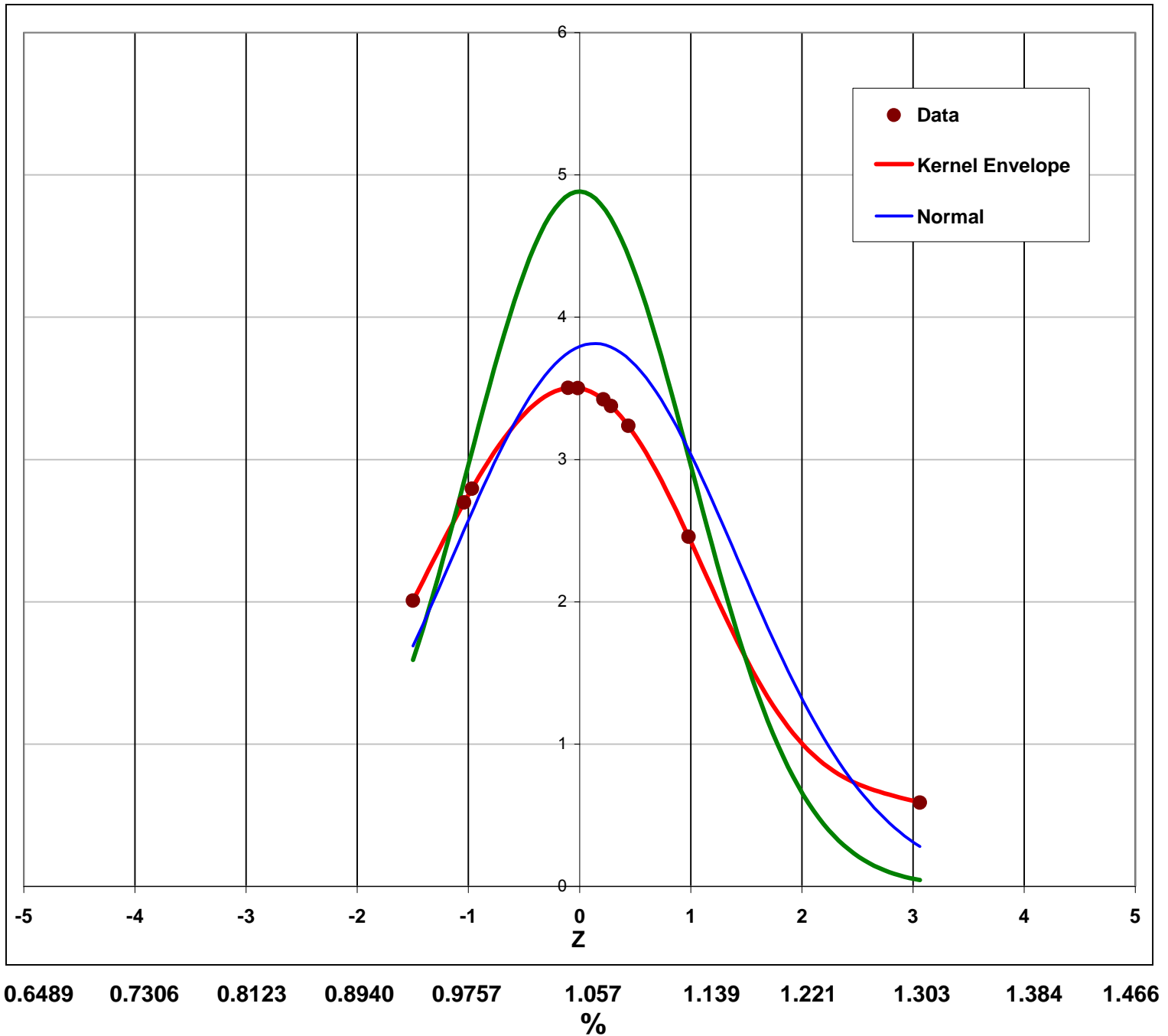


Method: Sucrose, 1 g/100ml Code: 006.00 (%)

SugarsStudy2013 Sample # 100010



Test Parameters	Raw Data	Robust
Mean	1.0685	1.0574
SD	0.10456	0.08170
%RSD	9.79%	7.73%
Average Range	0.0379	Na
Use Robust Statistics if n > 5?		OK!
Median	1.0656	1.0656
MAD	0.04975	0.0498
IQR	0.09409	0.09409
Min	0.93500	0.95496
Max	1.3075	1.1763
Kernal Density Bandwidth (h)		
Kernel h (0.75*σp IHP) (d1)		0.0784
# Labs subject to Robustification		10
# of H15 Iterations		2
Uncertainty in Assigned Value		
Uncertainty From Robust sd (U)		0.0183
Robust sd * 0.3		0.0245
Is U < Robust sd * 0.3?		Yes
95% CI of Robust Mean		
Lower		1.0216
Upper		1.0932
Mandel's Statistics		
	P	Critical
Dups too Far Apart (k)	0.01	2.324
Extreme Outlier (h)	1E-10	2.840
Count Used in Calculations		10
# Labs Submitting Results		10
# Values to the Right, off Chart		0
# Values to the Left, off Chart		0
# Analysts not Included in Calcs		0
Method Validation data		
Between Labs sL		0.0616
Within Labs sr		0.0336
Reproducibility sR		0.0702
Between Labs %RSD		5.92%
Within Labs %rsd		3.23%
Reproducibility %RSD		6.74%
Horwitz (%RSD)		3.97%
Average Range		0.0379
U NITS		%

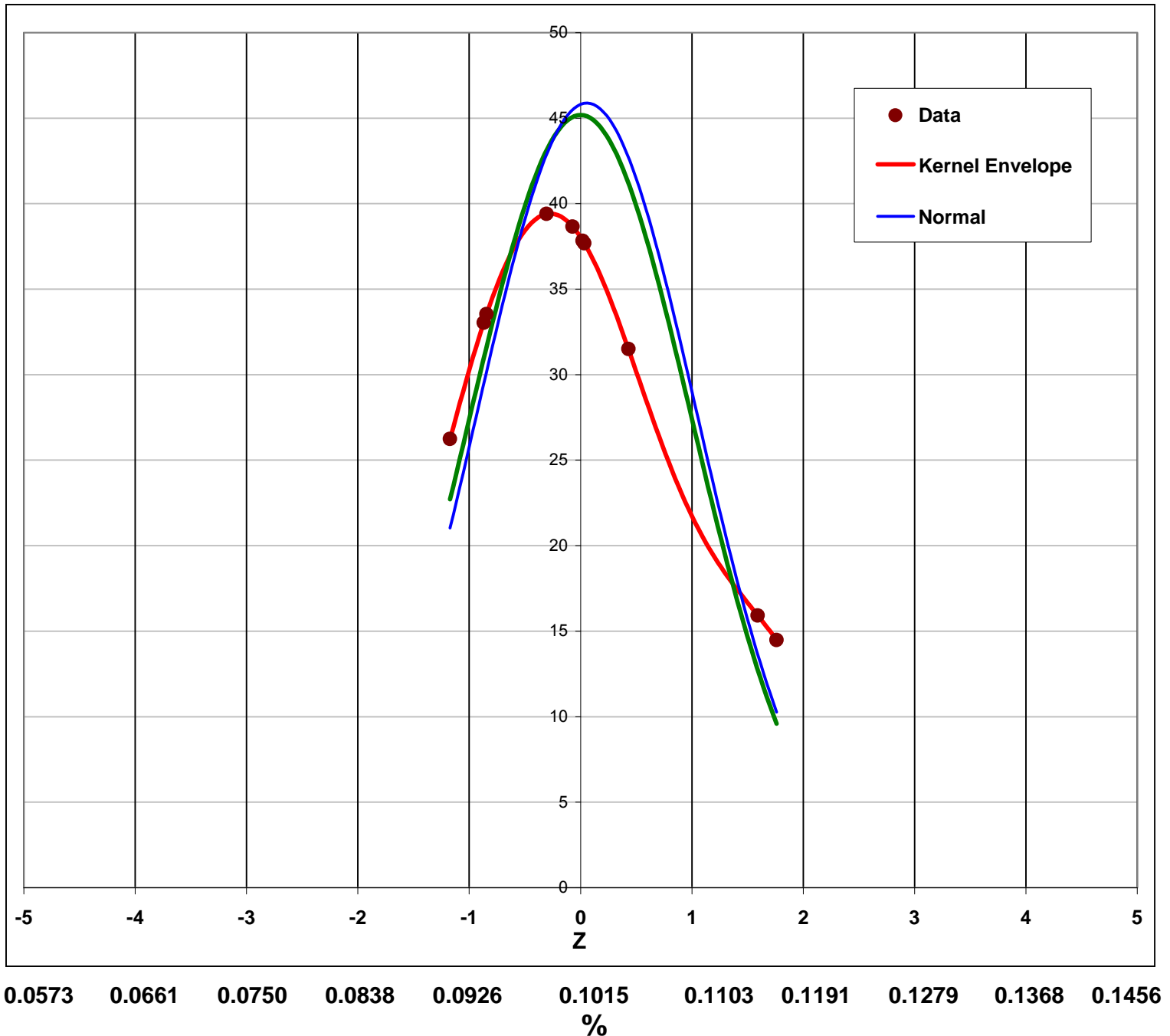


Method: Fructose, 100 mg/100ml Code: 011.00 (%)

SugarsStudy2013 Sample # 100010



Test Parameters	Raw Data	Robust
Mean	0.10196	0.10145
SD	0.00869	0.00883
%RSD	8.52%	8.70%
Average Range	0.0031	Na
Use Robust Statistics if n > 5?		OK!
Median	0.10123	0.10123
MAD	0.00562	0.0056
IQR	0.00918	0.00918
Min	0.09110	0.09110
Max	0.11700	0.11373
Kernal Density Bandwidth (h)		
Kernel h (0.75*σp IHP) (d1)		0.0065
# Labs subject to Robustification		10
# of H15 Iterations		2
Uncertainty in Assigned Value		
Uncertainty From Robust sd (U)		0.0020
Robust sd * 0.3		0.0026
Is U < Robust sd * 0.3?		Yes
95% CI of Robust Mean		
Lower		0.09758
Upper		0.10532
Mandel's Statistics		
	P	Critical
Dups too Far Apart (k)	0.01	2.324
Extreme Outlier (h)	1E-10	2.840
Count Used in Calculations		10
# Labs Submitting Results		10
# Values to the Right, off Chart		0
# Values to the Left, off Chart		0
# Analysts not Included in Calcs		0
Method Validation data		
Between Labs sL		0.0085
Within Labs sr		0.0026
Reproducibility sR		0.0089
Between Labs %RSD		8.33%
Within Labs %rsd		2.59%
Reproducibility %RSD		8.72%
Horwitz (%RSD)		5.64%
Average Range		0.0031
U NITS		%

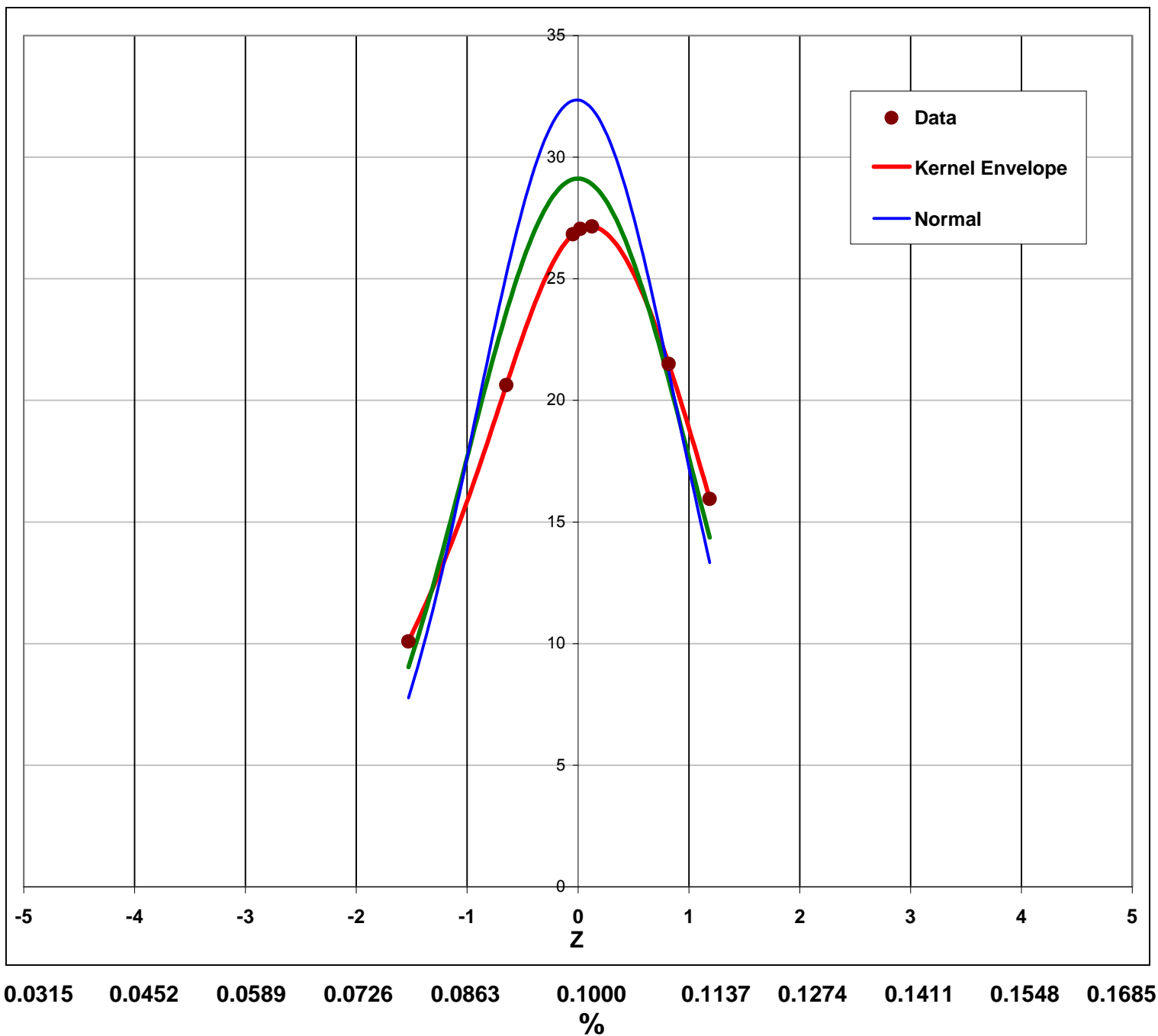


Method: Galactose, 100 mg/100ml Code: 012.00 (%)

SugarsStudy2013 Sample # 100010



Test Parameters	Raw Data	Robust
Mean	0.09983	0.09996
SD	0.01233	0.01370
%RSD	12.35%	13.71%
Average Range	0.0056	Na
Use Robust Statistics if n > 5?		OK!
Median	0.10025	0.10025
MAD	0.00915	0.0092
IQR	0.01121	0.01121
Min	0.07900	0.07990
Max	0.11625	0.11625
Kernal Density Bandwidth (h)		
Kernel h (0.75*σp IHP) (d1)		0.0092
# Labs subject to Robustification		7
# of H15 Iterations		2
Uncertainty in Assigned Value		
Uncertainty From Robust sd (U)		0.0037
Robust sd * 0.3		0.0041
Is U < Robust sd * 0.3?		Yes
95% CI of Robust Mean		
Lower		0.09278
Upper		0.10714
Mandel's Statistics		
	P	Critical
Dups too Far Apart (k)	0.01	2.207
Extreme Outlier (h)	1E-10	2.268
Count Used in Calculations		7
# Labs Submitting Results		7
# Values to the Right, off Chart		0
# Values to the Left, off Chart		0
# Analysts not Included in Calcs		0
Method Validation data		
Between Labs sL		0.0118
Within Labs sr		0.0050
Reproducibility sR		0.0128
Between Labs %RSD		11.83%
Within Labs %rsd		5.01%
Reproducibility %RSD		12.85%
Horwitz (%RSD)		5.66%
Average Range		0.0056
U NITS		%



Method: Glucose, 100 mg/100ml Code: 013.00 (%)

SugarsStudy2013 Sample # 100010



Test Parameters	Raw Data	Robust
Mean	0.10242	0.10485
SD	0.00987	0.00347
%RSD	9.64%	3.31%
Average Range	0.0034	Na
Use Robust Statistics if n > 5?		OK!
Median	0.10550	0.10550
MAD	0.00198	0.0020
IQR	0.00480	0.00480
Min	0.07745	0.10108
Max	0.11173	0.10992

Kernal Density Bandwidth (h)	
Kernel h (0.75*σp IHP) (d1)	0.0074
# Labs subject to Robustification	9
# of H15 Iterations	2

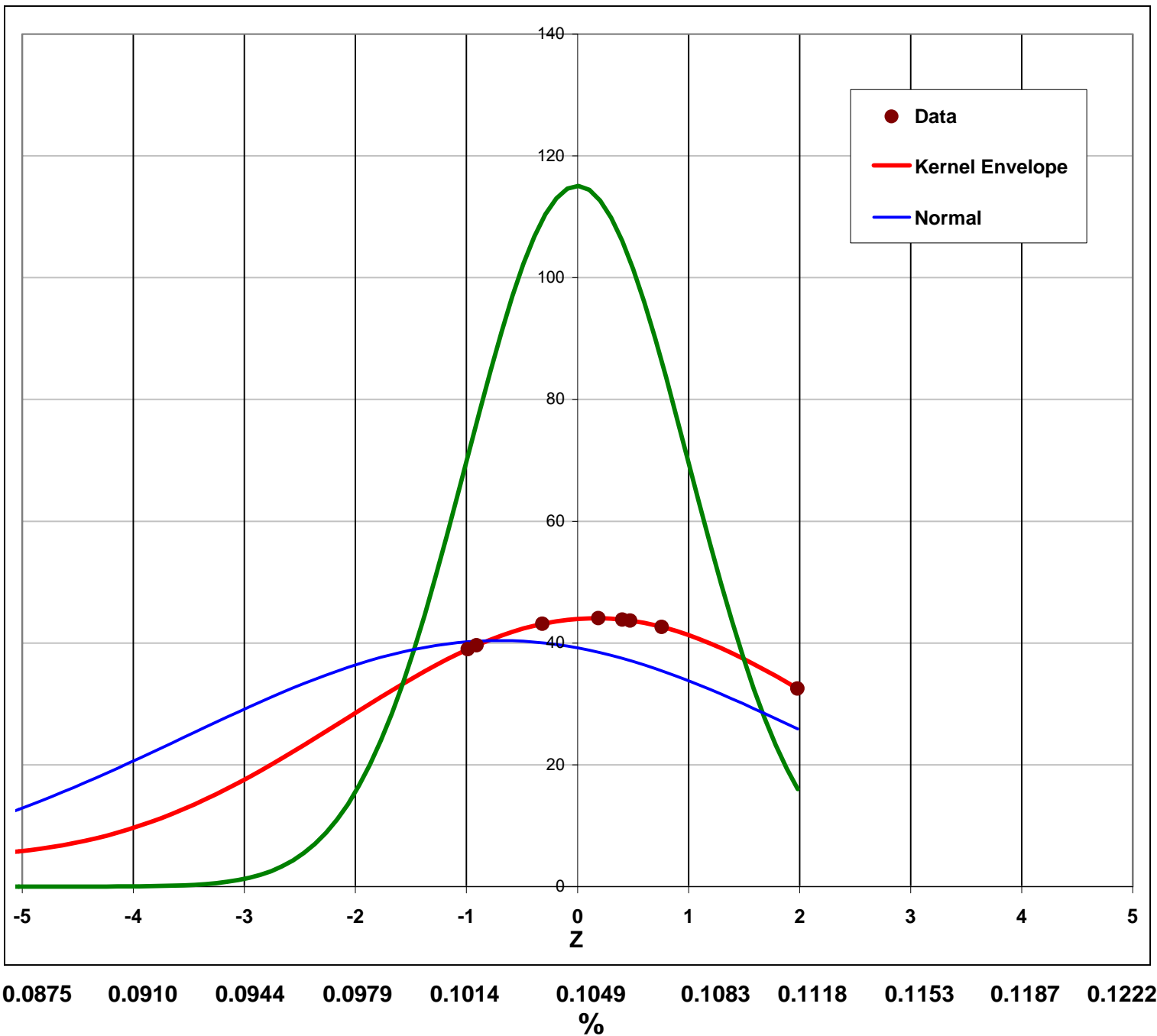
Uncertainty in Assigned Value	
Uncertainty From Robust sd (U)	0.0008
Robust sd * 0.3	0.0010
Is U < Robust sd * 0.3?	Yes

95% CI of Robust Mean	
Lower	0.10324
Upper	0.10645

Mandel's Statistics	P	Critical
Dups too Far Apart (k)	0.01	2.294
Extreme Outlier (h)	1E-10	2.664

Count Used in Calculations	9
# Labs Submitting Results	9
# Values to the Right, off Chart	0
# Values to the Left, off Chart	1
# Analysts not Included in Calcs	0

Method Validation data	
Between Labs sL	0.0029
Within Labs sr	0.0024
Reproducibility sR	0.0037
Between Labs %RSD	2.75%
Within Labs %rsd	2.23%
Reproducibility %RSD	3.54%
Horwitz (%RSD)	5.62%
Average Range	0.0034
U NITS	%

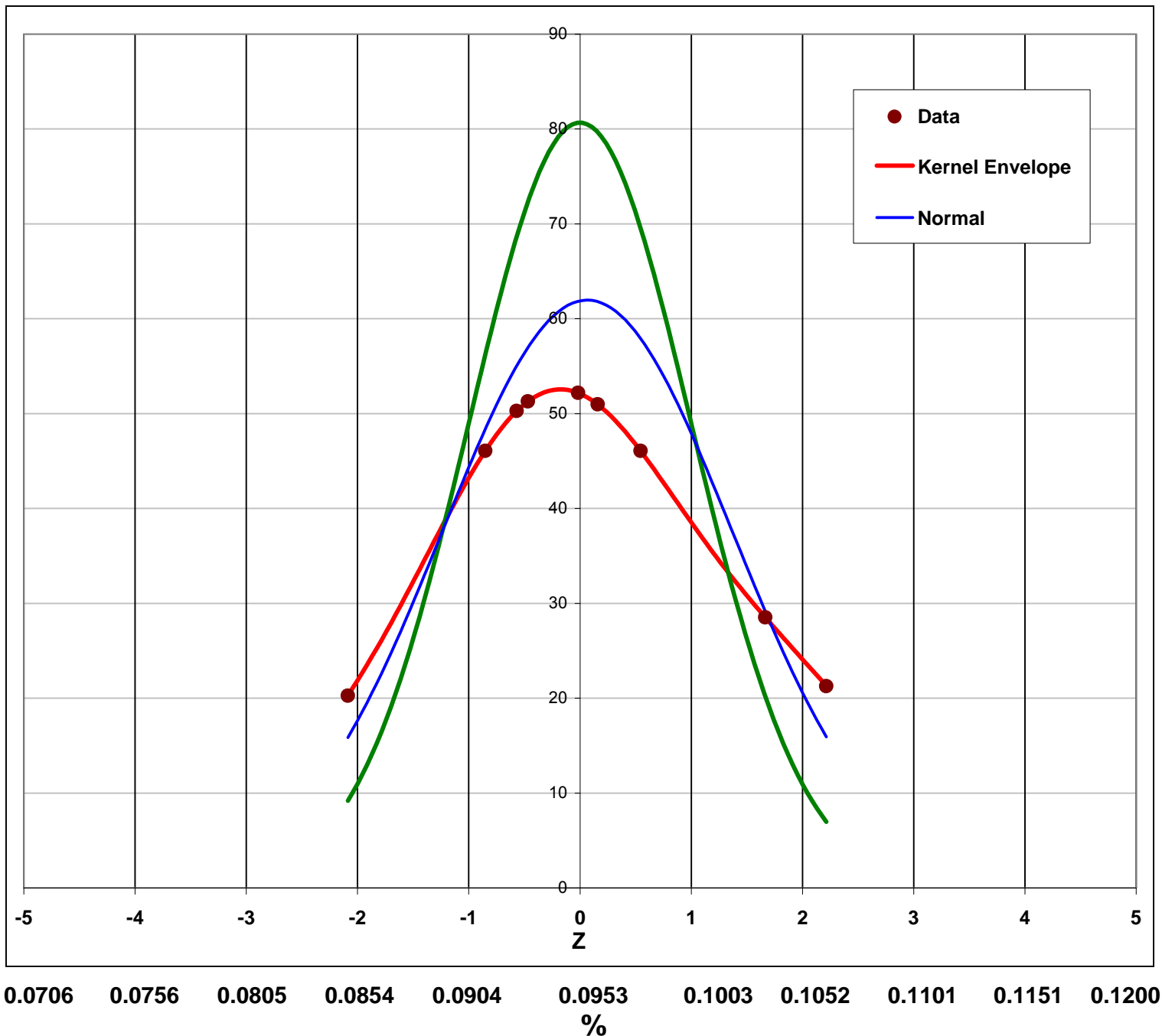


Method: Lactose, 100 mg/100ml Code: 014.00 (%)

SugarsStudy2013 Sample # 100010



Test Parameters	Raw Data	Robust
Mean	0.09564	0.09531
SD	0.00644	0.00494
%RSD	6.73%	5.18%
Average Range	0.0024	Na
Use Robust Statistics if n > 5?		OK!
Median	0.09523	0.09523
MAD	0.00278	0.0028
IQR	0.00550	0.00550
Min	0.08500	0.08905
Max	0.10625	0.10140
Kernal Density Bandwidth (h)		
Kernel h (0.75*σp IHP) (d1)		0.0048
# Labs subject to Robustification		9
# of H15 Iterations		2
Uncertainty in Assigned Value		
Uncertainty From Robust sd (U)		0.0012
Robust sd * 0.3		0.0015
Is U < Robust sd * 0.3?		Yes
95% CI of Robust Mean		
Lower		0.09302
Upper		0.09759
Mandel's Statistics		
	P	Critical
Dups too Far Apart (k)	0.01	2.324
Extreme Outlier (h)	1E-10	2.840
Count Used in Calculations		9
# Labs Submitting Results		10
# Values to the Right, off Chart		0
# Values to the Left, off Chart		0
# Analysts not Included in Calcs		0
Method Validation data		
Between Labs sL		0.0062
Within Labs sr		0.0022
Reproducibility sR		0.0066
Between Labs %RSD		6.53%
Within Labs %rsd		2.33%
Reproducibility %RSD		6.93%
Horwitz (%RSD)		5.70%
Average Range		0.0024
U NITS		%

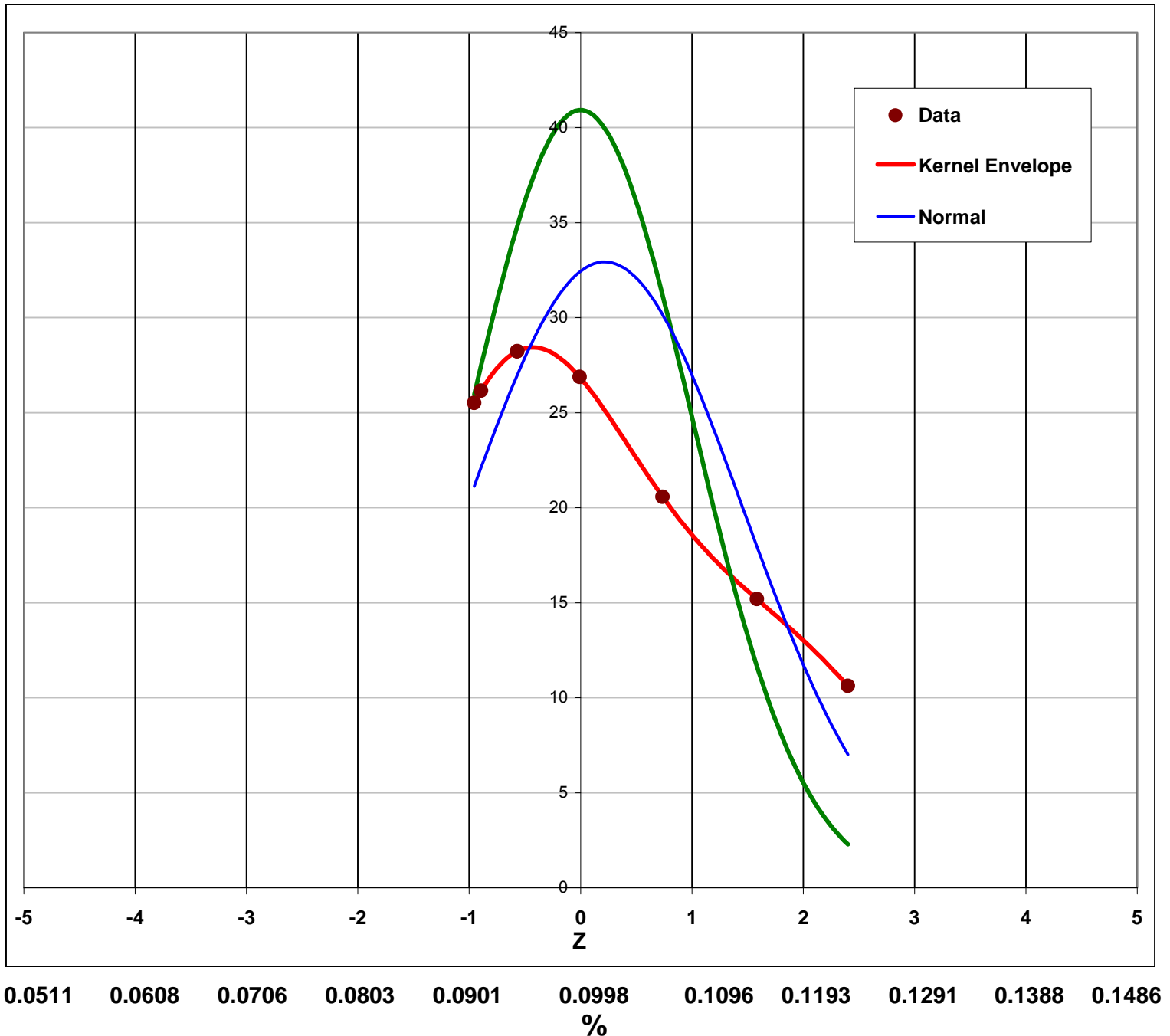


Method: Maltose, 100 mg/100ml Code: 015.00 (%)

SugarsStudy2013 Sample # 100010



Test Parameters	Raw Data	Robust
Mean	0.10192	0.09981
SD	0.01211	0.00975
%RSD	11.88%	9.77%
Average Range	0.0043	Na
Use Robust Statistics if n > 5?		OK!
Median	0.09700	0.09700
MAD	0.00620	0.0062
IQR	0.01560	0.01449
Min	0.09050	0.09050
Max	0.12323	0.11080
Kernal Density Bandwidth (h)		
Kernel h (0.75*σp IHP) (d1)		0.0091
# Labs subject to Robustification		8
# of H15 Iterations		2
Uncertainty in Assigned Value		
Uncertainty From Robust sd (U)		0.0024
Robust sd * 0.3		0.0029
Is U < Robust sd * 0.3?		Yes
95% CI of Robust Mean		
Lower		0.09503
Upper		0.10458
Mandel's Statistics		
	P	Critical
Dups too Far Apart (k)	0.01	2.256
Extreme Outlier (h)	1E-10	2.474
Count Used in Calculations		8
# Labs Submitting Results		8
# Values to the Right, off Chart		0
# Values to the Left, off Chart		0
# Analysts not Included in Calcs		0
Method Validation data		
Between Labs sL		0.0118
Within Labs sr		0.0039
Reproducibility sR		0.0124
Between Labs %RSD		11.57%
Within Labs %rsd		3.87%
Reproducibility %RSD		12.20%
Horwitz (%RSD)		5.66%
Average Range		0.0043
U NITS		%



Method: Sucrose, 100 mg/100ml Code: 016.00 (%)

SugarsStudy2013 Sample # 100010



Test Parameters	Raw Data	Robust
Mean	0.10368	0.10368
SD	0.00753	0.00854
%RSD	7.26%	8.24%
Average Range	0.0056	Na
Use Robust Statistics if n > 5?		OK!
Median	0.10409	0.10409
MAD	0.00609	0.0061
IQR	0.01084	0.01084
Min	0.09110	0.09110
Max	0.11475	0.11475
Kernal Density Bandwidth (h)		
Kernel h (0.75*σp IHP) (d1)		0.0056
# Labs subject to Robustification		10
# of H15 Iterations		2
Uncertainty in Assigned Value		
Uncertainty From Robust sd (U)		0.0019
Robust sd * 0.3		0.0026
Is U < Robust sd * 0.3?		Yes
95% CI of Robust Mean		
Lower		0.09994
Upper		0.10742
Mandel's Statistics		
	P	Critical
Dups too Far Apart (k)	0.01	2.324
Extreme Outlier (h)	1E-10	2.840
Count Used in Calculations		10
# Labs Submitting Results		10
# Values to the Right, off Chart		0
# Values to the Left, off Chart		0
# Analysts not Included in Calcs		0
Method Validation data		
Between Labs sL		0.0066
Within Labs sr		0.0050
Reproducibility sR		0.0083
Between Labs %RSD		6.41%
Within Labs %rsd		4.83%
Reproducibility %RSD		8.03%
Horwitz (%RSD)		5.63%
Average Range		0.0056
U NITS		%

